



Accredited  
by Joint Commission International

## Sister Concerns

Ahalia Foundation Eye Hospitals, Kerala  
 Ahalia Ayurveda Medical College Hospital, Palakkad  
 Ahalia Diabetes Hospital, Palakkad  
 Ahalia Women & Children's Hospital, Palakkad  
 Ahalia Public School, Palakkad  
 Ahalia School Of Optometry, Palakkad  
 Ahalia School Of Pharmacy, Palakkad  
 Ahalia School Of Engineering & Technology, Palakkad  
 Ahalia School Of Management, Palakkad  
 Ahalia School Of Paramedical Sciences, Palakkad

Ahalia Heritage Village, Palakkad  
 Ahalia Medicine Manufacturing Unit, Palakkad  
 Ahalia Children's Home, Palakkad  
 Ahalia Community Radio(90.4), Palakkad  
**UAE**  
 Ahalia Hospitals, Abu Dhabi  
 Ahalia Medical Centres accross UAE  
 Ahalia Pharmacies all over the UAE  
 Dawn Trading, Abu Dhabi  
 Al Ahalia Money Exchange Bureau, Abu Dhabi



Ahalia Heritage Village



Ahalia Foundation Eye Hospital



Ahalia Ayurveda Medical College Hospital



Ahalia Diabetes Hospital



Ahalia Women & Children's Hospital



Ahalia School of Engineering & Technology



Ahalia School of Management



Ahalia School of Pharmacy



Ahalia Public School

 **Ahalia Health, Heritage & Knowledge Village**  
 Ahalia Campus, Palakkad - 678557. ☎ 04923-225000, 225234



Accredited  
by Joint Commission International



"Kerala's Largest Eye Care Network"



**Ahalia Foundation**  **Eye Hospital**

Ahalia Campus, Palakkad - 678557. ☎ 04923-225000, 225234  
 administrator@afeh.org | www.afeh.org

Trivandrum Attingal Kayamkulam Pathanamthitta Changanassery Kottayam  
 Ernakulam Paravur Muvattupuzha Irinjalakuda Thrissur Pattambi  
 Mannarkkad Manjeri Kottackal Vadakara Kalpetta Kanhangad





Accredited  
by Joint Commission International



## Our Services





- Cataract & Comprehensive Ophthalmology
- Diabetic Retinopathy
- Glaucoma
- Cornea
- Vitreo Retina & uvea
- Pediatric Ophthalmology
- Lasik
- Squint
- Eye Bank
- ECHS, RSBY & Insurance
- Contact Lens Clinic
- Optical Shop
- Pharmacy



Accredited  
by Joint Commission International

## Cataract Surgery

A cataract is a clouding of the lens in the eye which leads to a decrease in vision. Cataracts often develop slowly and can affect one or both eyes.

Normal Eye	Cataract Eye
	
	
A healthy lens allows for all parts of the retina to receive the image.	A cloudy lens scatters light, causing an image that's out of focus and hazy.

## Symptoms of Cataract

- Faded Colors
- Blurry Vision
- Halos around Light
- Trouble with Bright Lights



Accredited by Joint Commission International

## Injection Free Cataract Surgery

Only eye drops are used to Anesthetize the eye!!



- No risk of bleeding
- Instant recovery
- No need for patching
- No need to stop anti-coagulants



Accredited by Joint Commission International

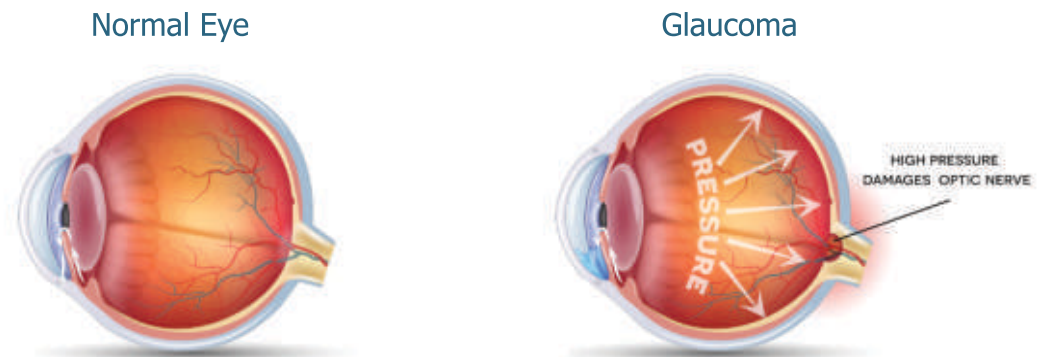
## Glaucoma

Glaucoma is a disease that damages your eye's optic nerve. It usually happens when fluid builds up in the front part of your eye. That extra fluid increases the pressure in your eye, damaging the optic nerve.



### Symptoms of Glaucoma

- Your vision is suddenly blurry
- You have a headache
- You throw up (vomit)
- You have severe eye pain
- You feel sick to your stomach (nausea)
- You see rainbow-colored rings or halos around lights





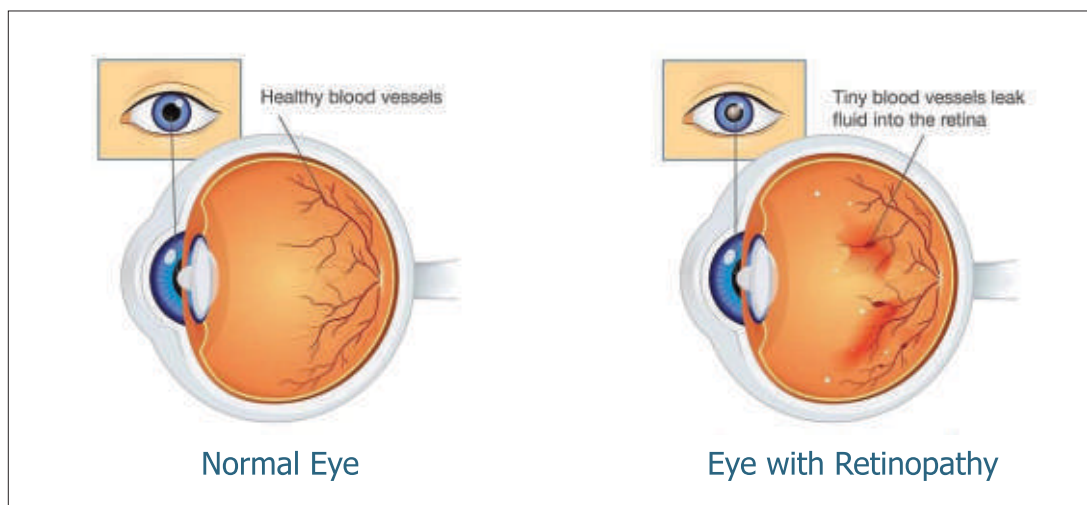
Accredited  
by Joint Commission International

## Vitreo-Retinal Services

- Diabetic Retinopathy
- Retinal Detachment
- Macular Hole
- Retinopathy of Pre-maturity
- Vitreous Hemorrhage
- Retinal Vein Occlusion
- Vasculitis
- Epi Retinal Membrane
- Vitreo-Macular Traction
- Macular Degeneration (Wet armd)

## Diabetic Retinopathy

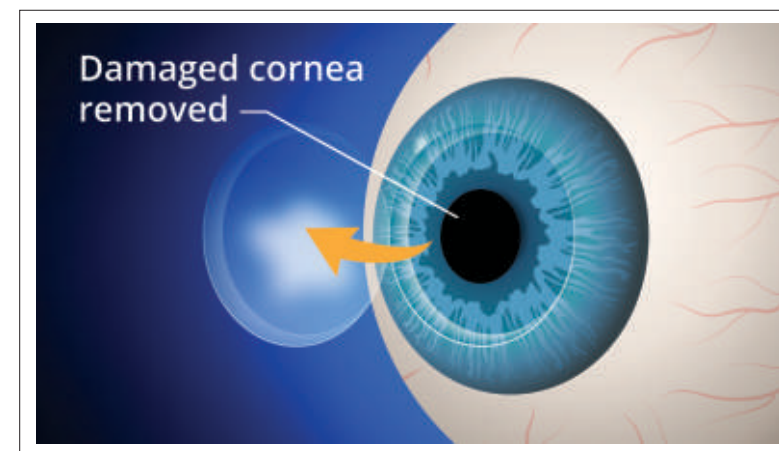
Diabetic retinopathy is the more advanced form of the disease. At this stage, new fragile blood vessels can begin to grow in the retina and into the vitreous, the gel-like fluid that fills the back of the eye. The new blood vessel may leak blood into the vitreous, clouding vision.



Accredited  
by Joint Commission International

## Cornea

The cornea is the transparent, dome-shaped window covering the front of the eye. It is a powerful refraction surface, providing 2/3 of the eye's focusing power. Like a watch glass, it gives us a clear window to look through.



Deeper injuries can cause corneal scarring, resulting in a haze on the cornea that impairs vision. If you have a deep injury, or a corneal disease or disorder, you could experience:

- Pain in the eye
- Sensitivity to light
- Reduced vision or blurry vision
- Redness or inflammation in the eye
- Headache, Nausea, Fatigue

If you experience any of these symptoms, seek help from an eye care professional.





Accredited by Joint Commission International

## Pediatric Ophthalmology



### Vision First !!

*Because children are future visionaries*

Watching the object too closely could be clue to vision impairment.



We have all the facilities to assess the child's vision

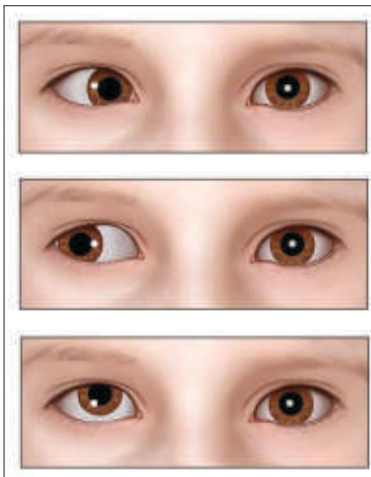
- Assessment of visual acuity appropriate for the age
- Accurate refraction
- Dispensing suitable pediatric eye wear
- We also manage red eye, watering, itching and any other symptoms related to child's eye

## Squint / Strabismus

Squint and wandering eye in children – is a “good luck” is a false social belief, can cost vision of the child for life. Squint in adults can be because of life threatening events.

We manage all types of squints in children and adults like,

- Duane's retraction syndrome
- Squints in Thyroid eye disease
- Nystagmus and many more.....



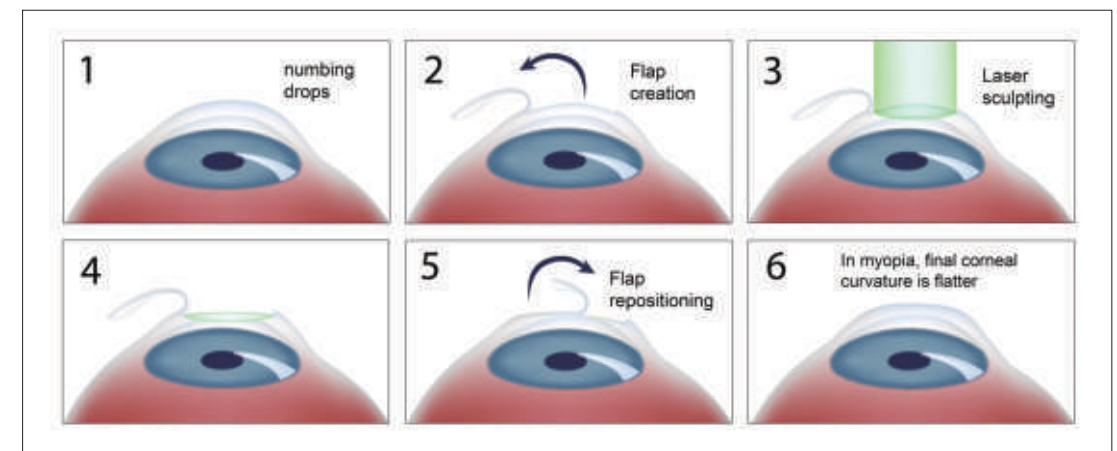
## Lasik



LASIK is a surgical procedure that uses a laser to correct nearsightedness, farsightedness or astigmatism.

LASIK (Laser In situ Keratomileusis) is a safe and effective vision correction for myopia (shortsightedness) hypermetropia (long-sightedness) and astigmatism.

The LASIK surgery is performed by an ophthalmologist who uses a laser or microkeratome to reshape the eye's cornea in order to improve visual acuity.





Accredited  
by Joint Commission International



## OPTICALS

Lenses | Brands | Sunglasses

### Frames

- Wayfarer
- Rimless
- Half Rim
- Rectangle
- Ultra-Light
- Metal / Shell

### Lenses

Lens Thickness : Standard-Thin , Extra-Thin, Ultra-Thin

Lens Type : Progressive, Crizal, Transition, Tined Lenses

Sunglasses (Specialty :Titanium, Polarized, Prescription, Sporty, Premium)

### Top Brands :

Rayban, Oakley, Tommy Hifiger, Emporio Armani, Carrera

### Contact lenses :

Frequency: Daily, Weekly, Monthly, Yearly

Lens Type: Soflens 59, Pure vision 2, Soflens multifocal, Soflens Daily Disposable

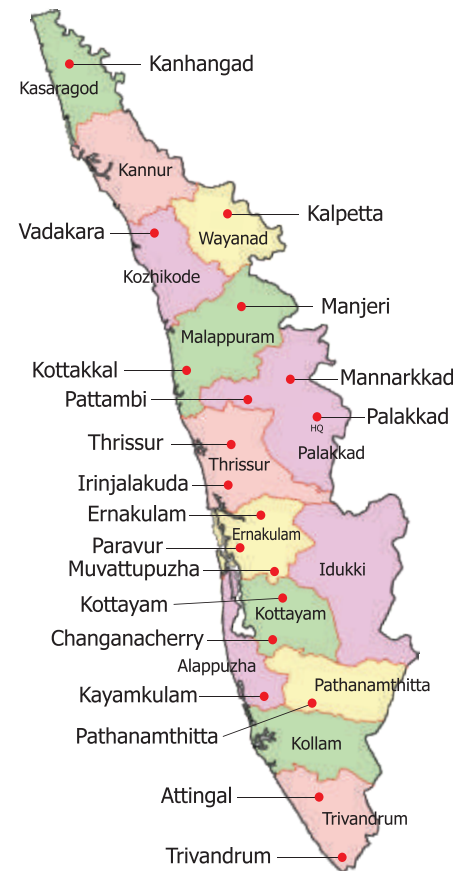
### Brands :

Rayban, Oakley, Tommy Hilfiger, Emporio Armani, Dolce & Gabbana, Carrera, Police, Vogue, Polaroid, D&G, Arcadio, Hugo boss, Boss Orange, Oxydo, Safilo, Montblanc, Roden stock



Accredited  
by Joint Commission International

## Ahalia Regional Centers



### Ahalia Foundation Eye Hospital Palakkad (Head Quarters)

Ahalia Campus, Palakkad - 678557  
Ph: 04923-225000  
E-mail: mail@afeh.org  
www.afeh.org

### Trivandrum

Rv's Arcade, Near Ulloor Bridge,  
Medical College (P.O),  
Trivandrum - 695 011  
Ph: 0471-2449970, 2449971  
9496396702, tvnm@afeh.org

### Attingal

Sarozs Arcade, National Highway  
Attingal, Trivandrum  
Ph: 0481-2449970, 71, 9496396701

### Pathanamthitta

Thekkemuriyil Arcade, College Road,  
Pathanamthitta P.O Pin: 689 645  
Ph: 0468-2224240, 9496396704

### Kayamkulam

Pulimootil Park Avenue,  
Park Junction, Kayamkulam 690 502  
Ph: 0479-2449715, 2443906,  
9496396703, kyklm@afeh.org

### Changanassery

A.C Road, Perunna, Changanassery  
Ph: 0481-2421200, 9496396705  
chry@afeh.org

### Kottayam

Thellakom (PO), Kottayam - 686630  
Ph: 0481-2791800, 9400247621  
ktyam@afeh.org

### Muvattupuzha

Velloorkunnam, Muvattupuzha  
Ph: 0485-2810070, 9496396706  
mvpa@afeh.org

### Ernakulam

Puthiya Road Junction, NH Bypass  
Palarivattom, Cochin-25  
Ph: 0484-2346555, 2346556  
9496396707, ekm@afeh.org

### Paravur

Pottan Street, North, Paravur  
Ph: 0484-2441957, 9496396711  
paravur@afeh.org

### Irinjalakuda

Kattungachira, Irinjalakuda North,  
Kerala. Ph: 0480-2833434,  
9496396713 ijk@afeh.org

### Thrissur

5th Floor, Thrissur Trade Centre,  
Kuruppam Road, Thrissur  
Ph: 0487-2428740, 2441740,  
9496396713 afehtcr@afeh.org

### Pattambi

Kalpaka Street, Melepattambi (P.O)  
Pin - 679 306 Ph: 0466-2210666,  
2210777, 9496396714, ptb@afeh.org

### Mannarkkad

Near Kunthipuzha Bridge,  
Ph: 04924-226200, 9496396719  
mnrkd@afeh.org

### Kottackal

Towns Ville, Edarkkode P.O, Kottackal,  
Malappuram - 676 501  
Ph: 0483-2751228, 2751229  
9496396715, ktka@afeh.org

### Manjeri

Palace Complex, Calicut Road, Manjeri  
Malappuram - 676-121  
Ph: 0483-2767192, 9496396716  
manjeri@afeh.org

### Kalpetta

Near Municipal Bus Stand,  
Kalpetta - 673 121  
Ph: 04936-206032, 206033,  
9496396713, kalpetta@afeh.org

### Vadakara

Atlas Buildings, Near Jyothi Petrol Pump  
Karimnapalam, Vadakara-6  
Ph: 0496-2517757, 2517737  
9496396708, vadakara@afeh.org

### Kanhangad

Chemattam Vayal, Opp. Dist. Hospital,  
Bella (P.O), Kanhangad  
Ph: 0467-2200844, 2201329  
9496396720, kanhangad@afeh.org