




AHALIA

EMBARK ON AN
INCREDIBLE JOURNEY
WITH

GROUP

 www.ahalia.in

 marketing@afeh.org
marketing@ahaliadiabetes.org

marketing@ahaliaayurvedic.org
marketing.awach@ahalia.in



04923 225000
04923 225555

04923 226888
04923 226000

ABOUT US

■ AHALIA GROUP

Ahalia Group started as an ordinary G.P. clinic in Abu Dhabi in the year 1984. This slowly expanded to become Ahalia Hospital with an aim to provide quality healthcare to all. Ahalia Group now consists of hospitals, medical centers, pharmacies, trading centers and money exchanges located all over the United Arab Emirates

■ AHALIA HEALTH, HERITAGE & KNOWLEDGE VILLAGE, KERALA

After establishing itself in the U.A.E., Ahalia Group spread its wings to India with the establishment of Ahalia Health, Heritage and Knowledge Village (AHHKV) in Palakkad, Kerala in 2005. The focus on health, heritage and knowledge is visionary and critical as they are inherited from the past, maintained in the present and bestowed for the benefit of future generations. AHHKV is a vast, eco-friendly blossoming campus with nine rain-water harvesting farms and is located in the foothills of the Western Ghats. This Integrated campus includes 4 Hospitals, 6 Educational Institutions and a Heritage Village.

■ AHALIA EDUCATIONAL INSTITUTIONS

AHHKV houses an integrated academic campus comprising of an Ayurveda Medical College, an Engineering College, a Pharmacy College, a B-School, School of Optometry & Para-Medical Sciences. The vision of Ahalia educational institutions is to "Conquer the World of Professional Education through Quality". It aims to transform students from all walks of life to knowledge-based, skill-intensive, ethical and moral professionals with competence, commitment and confidence.

■ AHALIA HOSPITALS

AHHKV houses an Ayurveda hospital, a Diabetes hospital, a Women & Children's hospital and an Eye hospital. Ahalia also has 19 regional centres for eye care across Kerala.





AHALIA FOUNDATION EYE HOSPITAL

OUR SERVICES

- Cataract & Comprehensive Ophthalmology
- Diabetic Retinopathy
- Glaucoma
- Cornea
- Vitreo Retina & uvea
- Pediatric Ophthalmology
- Lasik
- Squint
- Eye Bank
- ECHS, RSBY & Insurance
- Contact Lens Clinic
- Optical Shop
- Pharmacy



www.afeh.org



CATARACT SURGERY

A cataract is a clouding of the lens in the eye which leads to a decrease in vision. Cataracts often develop slowly and can affect one or both eyes.

SYMPTOMS OF CATARACT

- Faded Colors
- Blurry Vision
- Halos around Light
- Trouble with Bright Lights

INJECTION FREE CATARACT SURGERY

Only eye drops are used to Anesthetize the eye!!

- Instant recovery
- No need to stop anti-coagulants
- No risk of bleeding
- No need for patching

GLAUCOMA

Glaucoma is a disease that damages your eye's optic nerve. It usually happens when fluid builds up in the front part of your eye. That extra fluid increases the pressure in your eye, damaging the optic nerve.

SYMPTOMS OF GLAUCOMA

- Your vision is suddenly blurry
- You have a headache
- You throw up (vomit)
- You have severe eye pain
- You feel sick to your stomach (nausea)
- You see rainbow-colored rings or halos around lights

VITREO-RETINAL SERVICES

- Diabetic Retinopathy
- Retinal Detachment
- Macular Hole
- Retinopathy of Pre-maturity
- Vitreous Hemorrhage
- Retinal Vein Occlusion
- Vasculitis
- Epi Retinal Membrane
- Vitreo-Macular Traction
- Macular Degeneration (Wet armd)





DIABETIC RETINOPATHY

Diabetic retinopathy is the more advanced form of the disease. At this stage, new fragile blood vessels can begin to grow in the retina and into the vitreous, the gel-like fluid that fills the back of the eye. The new blood vessel may leak blood into the vitreous, clouding vision.

CORNEA

The cornea is the transparent, dome-shaped window covering the front of the eye. It is a powerful refraction surface, providing 2/3 of the eye's focusing power. Like a watch glass, it gives us a clear window to look through.

Deeper injuries can cause corneal scarring, resulting in a haze on the cornea that impairs vision. If you have a deep injury, or a corneal disease or disorder, ***you could experience:***

- Pain in the eye
- Sensitivity to light
- Reduced vision or blurry vision
- Redness or inflammation in the eye
- Headache, Nausea, Fatigue

If you experience any of these symptoms, seek help from an eye care professional.

PEDIATRIC OPHTHALMOLOGY

Vision First !!

Because children are future visionaries

Watching the object too closely could be clue to vision impairment.

We have all the facilities to assess the child's vision

- Assessment of visual acuity appropriate for the age
- Accurate refraction
- Dispensing suitable pediatric eye wear
- We also manage red eye, watering, itching and any other symptoms related to child's eye





SQUINT / STRABISMUS

Squint and wandering eye in children – is a “good luck” is a false social belief, can cost vision of the child for life. Squint in adults can be because of life threatening events.

We manage all types of squints in children and adults like

- Duane’s retraction syndrome
- Squints in Thyroid eye disease
- Nystagmus and many more.....

LASIK is a surgical procedure that uses a laser to correct nearsightedness, farsightedness or astigmatism.

LASIK (Laser Insitu Keratomileusis) is a safe and effective vision correction for myopia (shortsightedness) hypermetropia (long-sightedness) and astigmatism.

The LASIK surgery is performed by an ophthalmologist who uses a laser or microkeratome to reshape the eye’s cornea in order to improve visual acuity.



OPTICALS

Lenses | Brands | Sunglasses

Frames

- Wayfarer
- Rimless
- Half Rim
- Rectangle
- Ultra-Light
- Metal / Shell

Lenses

Lens Thickness : Standard-Thin , Extra-Thin, Ultra-Thin

Lens Type : Progressive, Crizal, Transition, Tined Lenses

Sunglasses (Specialty :Titanium, Polarized, Prescription, Sporty, Premium)

Top Brands

Rayban, Oakley, Tommy Hilfiger, Emporio Armani, Dolce & Gabbana, Carrera, Police, Vogue, Polaroid, D&G, Arcadio, Hugo boss, Boss Orange, Oxydo, Safilo, Montblanc, Roden stock

Contact Lenses

Frequency:Daily,Weekly, Monthly, Yearly

Lens Type:Soflens 59, Pure vision 2, Soflens multifocal,Soflens Daily Disposable



OUR REGIONAL CENTRES

■ Irinjalakuda

Kattungachira, Irinjalakuda North,
Irinjalakuda, Pin - 680125
Ph: 0480 - 2833434
E-mail: ijk@afeh.org

■ Ernakulam

Puthiya Road Junction, NH Bypass,
Palarivattom, Pin - 682025
Ph: 0480 - 0484 - 2346555, 2346556
E-mail: ekm@afeh.org

■ Kalpetta

Near Muncipal Bus Stand,
Kalpetta, Pin - 673121
Ph: 04936 - 206032, 206033
E-mail: Kalpetta@afeh.org

■ Kayamkulam

Pulimootil Park Avenue, Park Junction,
Kayamkulam, Pin - 690 502
Ph: 0479 - 2449715, 2443906
E-mail: kyklm@afeh.org

■ Pattambi

Kalpaka street,
Melepattambi (P.O), Pin: 679306
Ph: 0466 - 2210666, 2210777
E-mail: pattambi@afeh.org

■ Trivandrum

Rv's Arcade, Near Ulloor Bridge,
Medical college (P.O), Trivandrum
Pin - 695001, Ph: 0471 - 2449970
E-mail: tvm@afeh.org

■ Kanhangad

Chemmatam Vayal, Opp. District Hospital
Bella (P.O), Kanhangad, Pin - 695011
Ph: 0467 - 2200844, 2201329
E-mail: kanhangad@afeh.org

■ Kottackal

Towns Ville, Edarikkode (P.O)
Kottackal, Malappuram, Pin - 676501
Ph: 0483 - 2751228, 2751229
E-mail: ktkal@afeh.org

■ Thrissur

5th Floor, Thrissur Trade Centre,
Kuruppam Road, Thrissur
Ph: 0487-2428740, 2441740, 2428917
E-mail: afehtcr@afeh.org

■ Vadakara

Atlas Buildings, Near Jyothi Petrol Pump
Karimpanapalam, Pin - 673106
Ph: 0496 - 2517757, 2517737
E-mail: vadakara@afeh.or



OUR REGIONAL CENTRES

▪ Muvattupuzha

Velloorkunnam,
Muvattupuzha, Pin - 686673
Ph: 0484 - 2441957
E-mail: mvpa@afeh.org

▪ Paravur

Pottan Street, North,
Paravur, Pin - 683513
Ph: 0484 - 2441957
E-mail: paravur@afeh.org

▪ Changanassery

A.C.Road, Perunna,
Changanassery, Pin - 686102
Phone : 0481 - 2421200
E-mail: chry@afeh.org

▪ Attingal

Saroz Arcade, National Highway,
Attingal, Trivandram, Pin - 695101
Ph: 0470 - 2620990
E-mail: attingal@afeh.org

▪ Ponnani

OPP. Colors Interiors KVT Tower,
Near Thevar Temple, Thavanoor Road,
CV Junction, Ponnani, Malappuram
Pin -679577

▪ Pathanamthitta

Thekkemuriyil Arcade, College Road,
Pathanamthitta (P.O), Pin - 689645
Ph: 0468 - 2224240, 2224230
E-mail: pta@afeh.org

▪ Mannarkkad

Near Kunthippuzha Bridge,
Mannarkkad, Pin - 678583
Ph: 04924 - 226300
E-mail: mnrkd@afeh.org

▪ Manjeri

Palace Complex, Calicut road,
Manjeri, Malapuram, Pin - 676121
Ph: 0483 - 2767192
E-mail : manjeri@afeh.org

▪ Kottayam

Thellakom (P.O),
Kottayam, Pin - 686630
Ph: 0481 - 2791800
E-mail : ktym@afeh.org



AHALIA AYURVEDA MEDICAL COLLEGE HOSPITAL

ABOUT US

India's FIRST NABH accredited Ayurveda Medical College Hospital has flourished into a multi-specialty hospital with 100 beds and has been instrumental in taking Ayurveda to the common man. It is marching towards newer peaks in global competitive environment by religiously following the path of ethics, values, dedication, management excellence and enhanced social values..

Join us in serving Humanity @ AHALIA AYURVEDA

Where time tested health care practices combine with modern scientific advancements to provide a generation of globally competent medical care professionals.



www.ahaliaayurvedic.org



WHY AHALIA

- Well equipped with 14 departments and 40+ highly qualified Doctors/Physicians
- Teaching faculties
- 100 bedded hospital
- India's First NABH Accredited Ayurveda
- Medical College Hospital

KAUMARA BHRITYA

We care as much as you for your child

SERVICE

- Well baby clinic
- Preventive clinic for childhood allergic disorders
- Paediatric physiotherapy
- Panchakarma therapies
- Child immunity boosting programmes
- Adolescent clinic

SPECIAL TREATMENTS FOR

- Cerebral palsy
- Autism
- Behavioral Disorders
- Attention Deficit Hyperactivity Disorder (ADHD)
- Mental Retardation
- Learning Disorders
- Neuromuscular Disorders
- Childhood Obesity
- Childhood Asthma
- Childhood Skin Diseases
- Malnutrition

- Full fledged digital library as well as more than 11,000 printed books
- Herbal garden with over 400 species
- In House Medicine Manufacturing Unit
- Vast and serene Campus

KAYACHIKITSA

- Low Back Pain
- Sciatica
- Cervical Spondylosis
- Osteo Arthritis
- Rheumatoid Arthritis
- Paralysis
- Asthma, Fever
- Cough, Cold
- Psychiatric Disorders
- Gastric Ulcer
- Obesity
- Diabetes
- Geriatrics [old Age Diseases]
- Rasayana Chikitsa

SHALYA TANTRA

- Piles
- Fistula
- Fissure
- Fractures
- Dislocation
- Sprain
- Kidney Stone
- Ulcer (non Healing)
- Varicose Vein
- Gall Bladder Stone
- Liver Disorder & Jaundice
- Peptic Ulcer & Gastric Ulcer
- Abscesses
- Osteo Arthritis, IVDP
- Spondylolysthesis
- Rheumatic Pathology





PRASUTHI & STHREEROGA

PCOD – Clinic

Specialty Clinic

Effective ayurvedic management for polycystic ovarian disease

Infertility Clinic

Male & female infertility management through Ayurveda

Antenatal Care

Helps in relieving minor ailments of pregnancy & ensure the healthy development of foetus

Postnatal Care

Promotes lactation, Improves abdominal muscle tone, helps in involution of uterus & prevents long term complication

Effective Ayurvedic management for all Gynecological Diseases - Uterine Fibroids Endometriosis Adenomyosis Abnormal Vaginal, Discharges etc.....

OUR TREATMENT INCLUDES

- Internal medications
- Snehapana (Intake of medicated lipids)
- Nasyam (Which helps in restoring hormonal balance)
- Shirodhara (Regulates HPO axis function)
- Gynecological procedures like
 - Yoni prakshalanam(Douching /Cleansing)
 - Yoni pichu(Placing medicated cotton balls inside vagina)
 - Uttarabasthi(Installation of medicines into the vagina, cervix and uterus)

Rejuvenation packages on demand

For more details, Contact - Ph: 04923 226888

PANCHAKARMA

Bio - Purification / Detoxification

Metabolic Disorders

Obesity, Diabetes

Joint Problems

Rheumatology: Knee pain, Neckpain, Backpain, etc.

Dermatitis

All types of Skin Diseases

Respiratory Disease

Cold, Cough, Bronchitis, Sinusitis, etc.

Neurological Diseases

Paralysis, Sciatica, Diabetic Neuropathy, etc.

Anxiety Diseases

Insomnia, Stress, etc.





AHALIA LAKE HOUSE

ABOUT US

Ayurvedic treatment get a new dimension in Ahalia Ayurveda Lake View Cottages which are placed on the borders of a vast expanse of rain water harvest spotted with wild flora and fauna. The ambience of Lake house, which is a fully furnished 2 BHK Unit amidst the virgin greenery of Palakkad in the backdrop of the Western Ghats will leave you feeling fresh and rejuvenated after your stay.



AHALIA AYURVEDA HOSPITAL (VALAPAD)

ABOUT US

Authentic Ayurveda in its truest form is available at your doorstep at Ahalia Ayurveda Hospital, Kothakulam Beach, Valapad with Qualified and experienced Doctors and skilled Panchakarma Therapists for prevention and cure of ailments with a traditional approach.



HEALTH AND DISEASES

The imbalance of Tridoshas (Vata, Pitta & Kapha) disturbs the functions of the body and leads to various diseases. Ayurveda advocates purification and pacification therapies along with appropriate diet regimen. Ayurveda gives equal importance to mental health for which a regime of ethical life is prescribed.

HEALTH REJUVENATION

- Rejuvenation Programme
- Body Purification Programme (Panchakarma)
- Slimming Programme
- Beauty Care Programme
- Stress Management Programme
- Fitness Programme
- Special Packages for IT Professionals
- Antenatal & Postnatal care
- Geriatric Care

SPECIAL TREATMENTS FOR

- Cerebral palsy
- Autism
- Behavioral Disorders
- Attention Deficit Hyperactivity Disorder (ADHD)
- Mental Retardation
- Learning Disorders
- Childhood Skin Diseases
- Neuromuscular Disorders
- Childhood Obesity
- Childhood Asthma
- Malnutrition

TREATMENTS

Abhyanga

Abhyanga is the procedure where the body is massaged using a medicated oil all over the body. This imparts oleation, complexion, stability, destroys fatigue and disturbances due to vata dosha.

Njavarakizhi

Njavarakizhi is one of the traditional treatment forms of Astavaidya tradition in Kerala. It is a procedure by which the whole body or any specific part thereof is made to perspire by the application of certain medicinal drugs with Njavara (special variety of rice that grows in 60 days) rice puddings externally in the form of boluses tied up in a muslin bag.





Ilakizhi

Ilakizhi (Patrapotala Sweda) is a type of Swedana Chikitsa (fomentation) wherein leaf poultice are used to give fomentation on whole body or any specific part.

Kaya Seka (Pizhichil)

Kaya Seka (Pizhichil) is the process in which the body is made to perspire by means of pouring of warm medicated oil in a specific manner.

Podikizhi(Choorna Pinda Sweda)

Podikizhi(Choorna Pinda Sweda) is a type of Swedana Chikitsa (fomentation) wherein medicated powders are made into poultice and used for giving fomentation.

Dhara (Shirodhara)

Dhara (Shirodhara) Is otherwise known as Sirasekam. It is One Of the many Special types of treatment widely practised in Kerala for diseases of the head.

Sirovasthi

Sirovasthi is the procedure where in the medicated oil is retained on the head for a prescribed period.

Udwarthanam (Dry Massage)

Udwarthanam (Dry Massage) is the treatment where in the massage is done with powders of medicines. The powder is rubbed forcibly on the body in upward direction.

CONTACT US

Kothakulam Beach
VALAPAD(PO)
Thrissur Dist.
Kerala 680567
Ph: +91 487 2397000
Email: valapad@ahaliaayurvedic.org

For Booking Contact:

Ahalia Ayurveda Hospital
Valapad
Email: marketing@ahaliaayurvedic.org
PH: +91 487 2397000



AHALIA DIABETES HOSPITAL

ABOUT US

Cocooned in verdant greenery and away from the din and bustle of the city is the Ahalia Diabetes Hospital, the one and only comprehensive diabetes hospital in Kerala. The mission here is to improve quality and longevity of lives of patients with diabetes and in turn offer 'comprehensive; diabetic care in the ideal sense.



www.ahaliadiabetes.org



SPECIAL TREATMENTS

- Diabetology
- Diabetic Retinopathy
- General Medicine
- Anesthesiology Department
- General Surgery
- Orthopedic Department
- Podiatry Department

LAB FACILITIES (NABL ACCREDITED)

- Biochemistry
- Clinical Pathology
- Haematology
- Microbiology
- Serology

SPECIAL PACKAGES

- Basic Diabetes Checkup
- General Health Checkup
- Master Diabetes Checkup
- Executive Diabetes Checkup

OTHER FACILITIES

- Physiotherapy & Rehabilitation Centre
- Health Fitness Centre
- Diab Self Help
- Diabetic footwear
- Opticals

ORTHOPEDICS

- Computer assisted Total Knee and Hip Replacement surgery- Maximize Movement with blissful comfort!
- Minimally invasive Spine Surgery- Effortlessly "Back" to normal
- Advanced Polytrauma care & Damage Control Orthopaedics- We pursue the real need for speed and never take a "break" (for granted)
- Custom Modular Implant Technology in Laminar State of the Art Theater- Bringing the "Art of Healing" to the fore
- Sports Medicine, Arthroscopy/Keyhole Surgery- Bringing the champions back to track
- Paediatric Orthopaedics- Cosmetic correction of Deformities- Get your Future Investments Right
- Spine, Arthritis, Osteoporosis, Rheumatoid and Pain Management Clinics - You can trust our "clinical judgement"





PODIATRY

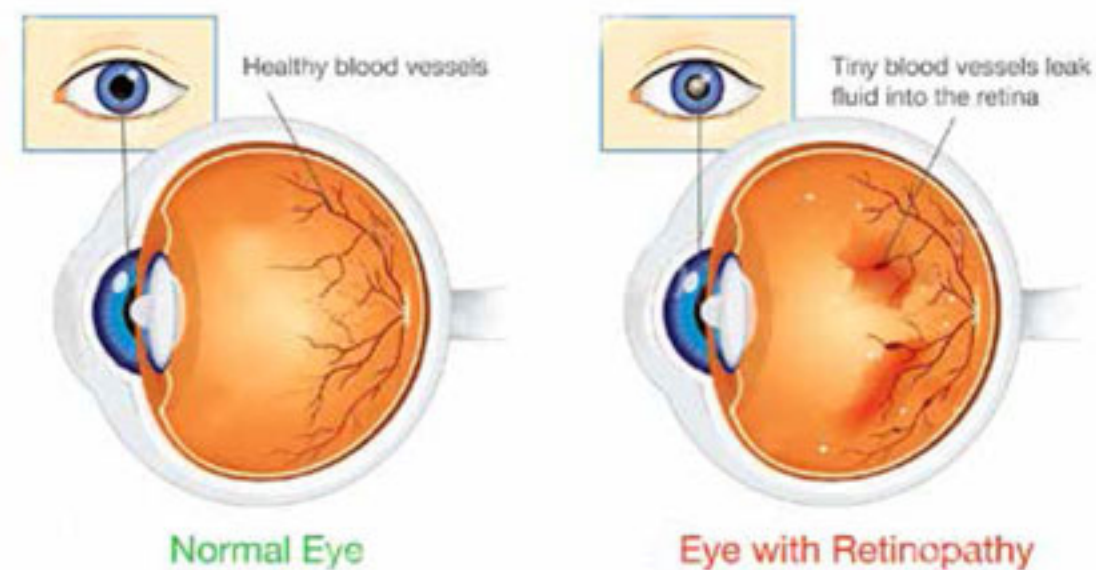
- Anodyne therapy for peripheral neuropathy
- Infrared thermometer
- Fully equipped podiatry lab
- ABI,VPT,HCP –for checking foot blood circulation and nerve function



GENERAL MEDICINE

Routine management and diagnosis of common and specific ailments. Comprehensive management of communicable (TB, HIV, Hepatitis) and non communicable diseases with supportive management of lung, renal and skin diseases besides managing chronic ailments with the utmost care

DIABETIC RETINOPATHY



Screening : Every diabetic and even other patients are thoroughly checked for retina. A special drive for screening of diabetic retinopathy is performed. All documents in paper and digital format is maintained for periodic checkup and necessary treatment when required.



Technology : Department is well equipped with most high-tech and modern investigation facilities like Fundus Camera, OCT, Laser, B.Scan etc.

Treatment Modalities : The department performs all needed treatments of retina like intra-vitreous injection/Laser/Surgeries etc. Most complex surgeries for diabetic retinopathy/retina detachment/eye injuries are performed in most high-tech and equipped operation theater

“ Kerala’s First Comprehensive Diabetes Hospital of True Global Standards with all sub specialities & support services ”



HOURS SERVICES



- CT Scan
- Accident & Emergency Services
- ICU Ambulance Service (Ph: 8281820303)
(Ventilator & Non Ventilator)
- Blood Bank (Ph: 9400214146)
- Radiology
- Pharmacy
- NABL Certified LAB



 04923 225555, 9496004520



AHALIA WOMEN & CHILDREN'S HOSPITAL

ABOUT US

Ahalia Women and Children's Hospital is a unit of Ahalia Health care, situated in the Ahalia Health Heritage and Knowledge village, Palakkad. A wide range of upcoming facilities including a total capacity of 350 beds will be incorporated soon to widen the scope of services to providing comprehensive Women's and child health care.

We are committed to providing an environment that supports our philosophy of caring and healing for both our patients and their families. We look forward to working with you and to make this hospital experience as pleasant as possible.



www.ahalia.in/awach/



OUR DEPARTMENTS

- Obstetrics & Gynecology
- General medicine
- Pediatric department
- General surgery
- Neonatology
- Diabetology
- Pediatric ophthalmology
- Anesthesiology

SPECIAL CLINICS

- Infertility clinic
- New born care
- Menopause clinic
- Adolescent clinic
- Cancer detection clinic
- Behavioral therapy clinic
- Teenage clinic
- Vaccination clinic
- PCOD clinic
- Allergy asthma clinic
- Well mother well baby club
- Special pediatric clinic

OUR FACILITIES

- NICU-with ventilator facility
- PICU
- Labor suite room
- Modular OT
- Ultrasound
- Phototherapy
- Physiotherapy
- Dietician
- Counseling

SPECIAL PACKAGES

- Basic check-up
- Master check-up
- Executive check-up
- Antenatal check-up
- Painless delivery available here

DEPARTMENT OF NEONATOLOGY

SERVICES OFFERED

- Experienced team of doctors
- Well trained NICU staff



- State-of-the-art NICU Complex with well-equipped NICUs (3 Levels)
- Well equipped resuscitation room - Baby resuscitated by NRP trained Doctors
- Ventilator
- Bubble CPAP
- Phototherapy Unit
- Mobile Digital X - Ray
- Mobile USG
- NICU-on-wheels (Ventilator & incubator equipped Neonatal Ambulance) for transport



COMPREHENSIVE CARE INCLUDES

- All aspects of Antenatal, Perinatal and Postnatal care
- Labour suite
- Well baby Clinic
- Vaccination Clinic
- High risk newborn Clinic
- Inborn errors of Metabolism Screen
- Retinopathy of Prematurity Screening
- Universal Hearing Screening



24 HOURS SERVICES



- Doctor's service.
- CT Scan & X-Ray
- Emergency care
- Blood bank (9400214146)
- Laboratory
- Pharmacy
- Ventilator & Non-Ventilator ICU ambulance (8281280303)



 04923 226000, +91 6282762022



AHALIA



WOMEN & CHILDREN'S HOSPITAL

Ahalia Campus, Palakkad - 678557 Ph: 04923 226000 E-mail: mail.awach@ahalia.in

NEONATAL INTENSIVE CARE UNIT (LEVEL III)

NOW IN PALAKKAD

24x7 AVAILABILITY OF NEONATOLOGIST



04923 226000, +91 6282762022



AHALIA MEDICINE MANUFACTURING UNIT

ABOUT US

Ahalia medicine manufacturing unit, a unit of Ahalia Health Heritage Knowledge village, Palakkad started operations seven years back. Today it is full fledged production unit with most modern equipments of manufacturing. During these years we catered to the needs of patients by manufacturing quality medicines at international standards.



www.ahalia.in



QUALITY STANDARDS & FACILITIES

- State of the art manufacturing unit with fully automatic machines like tablets punching machine, blister packing machine and capsuling machine.
- License to manufacture more than 400 medicines which covers most of the popular medicines in various classes of Ayurveda
- Well-equipped laboratory for quality control Research and Development activities
- The striking advantage we have at Ahalia is ability to source most of the vital fresh herbs with in our campus



AHALIA HERITAGE VILLAGE

ABOUT US

The Ahalia Heritage Village was founded in 2008, in what was then a small out-of-the-way place surrounded by greenery. Today the greenery remains, but the Village has transformed into a multi-functional retreat. Over the years, we have built new facilities (and continue to do so), while expanding our repertoire of books, performances and collections. We hope to continue our good work for many more years to come.



www.ahaliaheritagevillage.org



Ahalia Heritage Village

Vision & Mission

"The purpose of Art is washing the dust of daily life off our backs." - **Pablo Picasso**

We live our lives surrounded by the histories and culture of millions of people before us. Who were those people? What were their lives like? What motivated them in life? These questions about people whose lives we will never experience, provides us answers to who we are. Ahalia Heritage Village aspires to answer these questions, and thereby bring to light the hidden gems of a culture that has long been ignored: our own.

This space is our humble attempt at unweaving the rainbow that is Indian culture. Today, our cultural heritage is at a risk of being overrun by the unstoppable forces of modernization. It is only by pausing and appreciating what we have, can we look to the future. This is our shot at it.

EXPERIENCE

At our campus, we provide experiences for the novice as well the connoisseur. Some of the experiences we provide are listed below. This, however, constitutes only about half of what we can offer the discerning individual.

KOOTHAMBALAM & ANIYARA

The Koothambalam lies at the heart of the performing arts of Kerala, literally and figuratively. It is the traditional performing arena for iconic arts forms like Koodiyattom and Chakyar-koothu . We have recreated such a space here, with all its attached mystique and aura. The Aniyara is the ancient equivalent of the modern green room, and is the place for the artiste to get ready for her performance.





TERRACOTTA SCULPTURE MUSEUM

Consisting of more than five hundred pieces of terracotta artwork created by artists representing the length and breadth of India, this museum provides a snapshot of India's intellectual, cultural and historic heritage.

BUST PARK

Celebrated theatre personalities, social reformers, musicians and literary figures from across the world are memorialized in our own little busts park.



GRANITE SCULPTURE PARK

This park has over thirty sculptures, some of which are up to 20 feet in height. The park is built around the theme of womanhood and has sculptures of figures from Indian myth and legend like Ahalia, Draupadi and Kannagi.



MUSEUM OF DAILY LIFE AND MUSICOLOGY

- Our museum on Musicology and Ethnomusicology exhibits 450 musical instruments
- The daily life pattern of South Indians are elucidated through museum pieces collected from core areas
- The vanishing, rather vanished art of weaving is showcased here



COURSES

These are the courses we offer at Ahalia Heritage Village



MUSIC

In instrumental music, we offer courses in the Chenda, Violin, Guitar, Edakka and Bamboo Music. We also offer courses in Carnatic music.

ART

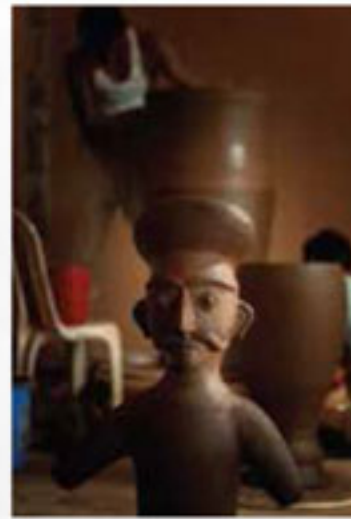
Currently, we offer classes in Basic Mural Painting.

DANCE

We have courses in Bharatha Natyam, Mohiniyattam and Kuchippudi.

CRAFT

Offers different types of craft related activity



CONTACT DETAILS

Ahalia Campus, Kozhippara P.O.
Palakkad District, Kerala State, Pin 678 557

Ph: 0491 2971008, 9447082233, 9947910706
Email: heritage@ahaliagroup.com



AHALIA VOICE 90.4

ABOUT US

We are a Community Radio Station Ahalia voice 90.4, broadcast has content relevant to the Educational development, Social and Cultural needs of the community in and around the campus in Palakkad(Kerala) Dist. It is the first FM station of Palakkad catering to the needs of children, women, youth, farmers, workers, small business people, entrepreneurs etc. the station is on air from 0600 hrs in the morning to 2200 hrs in the night. It has various interesting, informative and inspiring programmes in the subjects of health, education, knowledge, welfare schemes, current news, cultural and social issues of the community, helping for the integrated development of the society. In a span of 5 years, the Community Radio Station has been successful in grabbing the attention and imagination of the various sections of the society and its popularity has risen manifold in Palakkad Dist.





**AHALIA
EVENTS**





